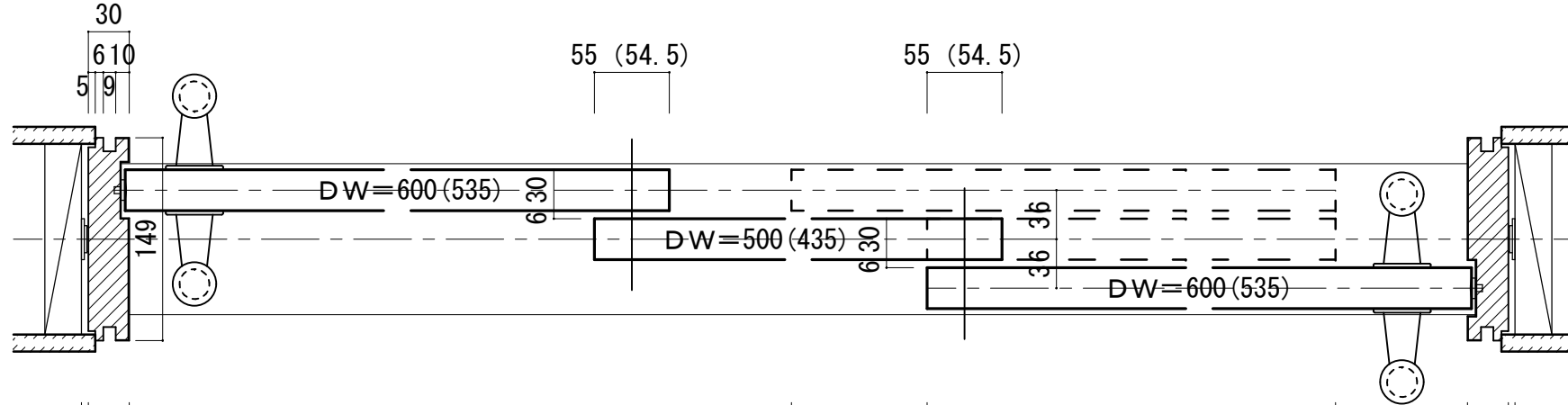


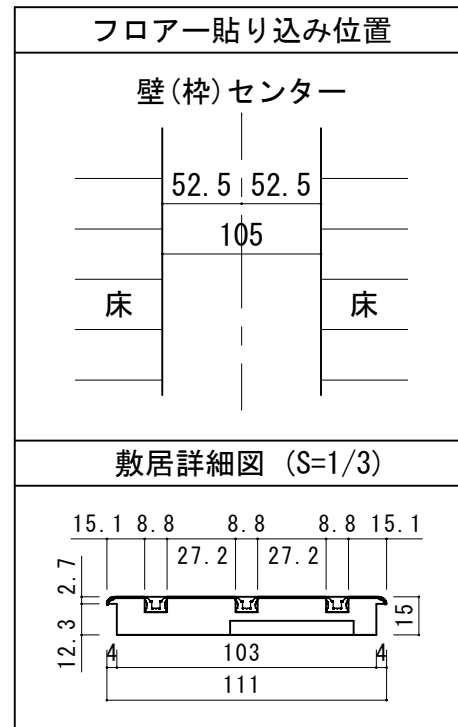
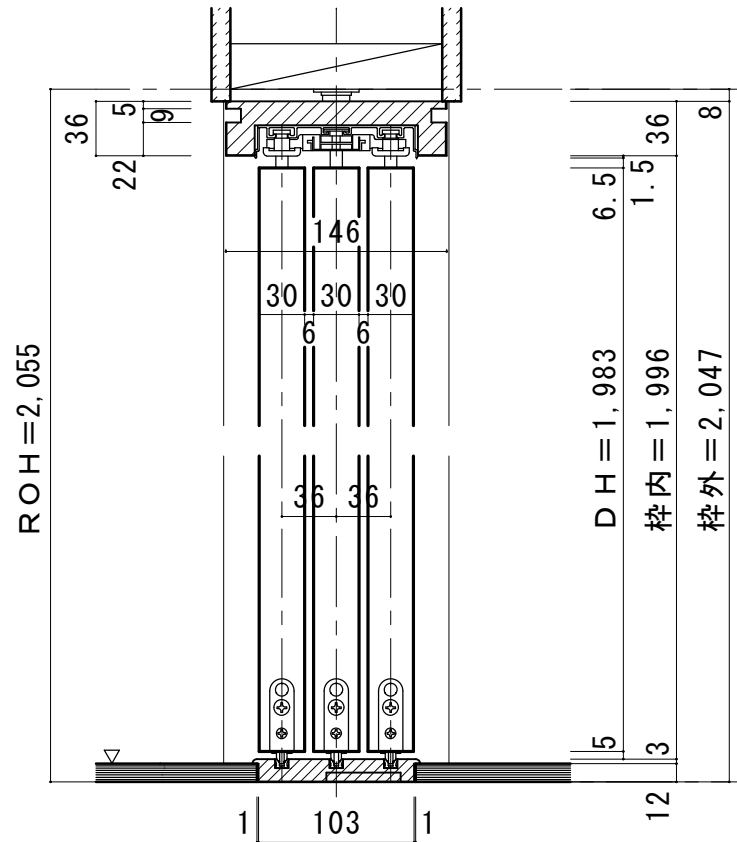
# 3枚連動引き戸 レールタイプ 調整枠

■横断面図



30	有効開口寸法 = 887 (758)	引残 = 100	500 (435)	97	30
5	枠内 = 1,584 (1,390)				5
	枠外 = 1,644 (1,450)				
	ROW = 1,654 (1,460)				

■縦断面図 [レールタイプ]



■縦断面図 [床直付けレールタイプ]

